



HELIPAD Information



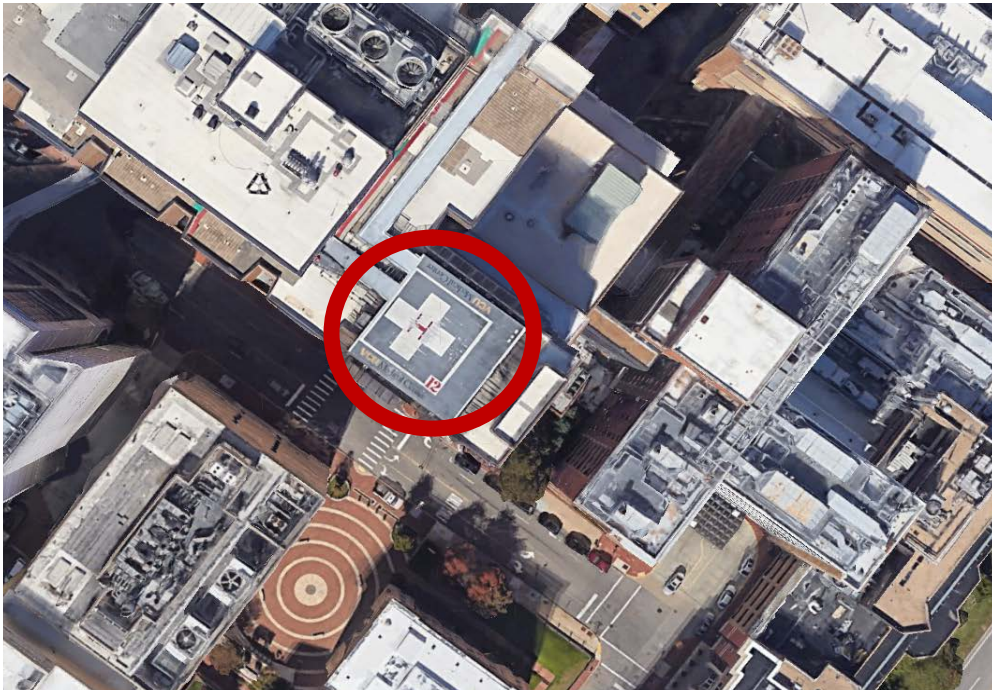
VCU Health & Children's Hospital of Richmond

<p>Purpose</p>	<p>VCU Health Helipad is a high-volume helipad, serving many air medical agencies throughout the region. Below you will find information regarding important helipad information and important communication that should be made prior to utilizing the VCU Health Helipad(s).</p>		
<p>Communication Process</p>	<p style="text-align: center;">LIFECOMM (VCU Communications): 804-828-3989</p> <ul style="list-style-type: none"> • Call Sign "VCU Communications" is the controlling entity for all inbound/outbound aircraft to VCU Helipad(s) • Comm Centers are encouraged to call the VCU ED Comm Room when they are aware that any aircraft will be inbound to VCU Helipad. This ensures that the helipad is clear and appropriate personnel are onsite to assist the flight crew. • Aircraft should call via radio, if able, ten-fifteen (10-15) mins prior to landing to give appropriate patient report. (or 10-20 nautical miles) • Aircraft should utilize MED-9 radio frequency as the primary point of contact • Flight Following can be conducted by LIFEEVAC Communications, call sign "LIFECOMM" via MED-9 radio frequency • If the secondary helipad (listed below) is needed – ground transport will need to be arranged. Timely notification of the aircraft inbound will ensure ground resources are available. • VCU Communications (LIFECOMM) will make appropriate notifications internally to ensure department(s) are aware of the aircraft's ETA and make appropriate alerts. • VCU Communications (LIFECOMM) will also arrange for security to respond to "clear" the helipad 		
<p>Radio Frequencies</p>			
<p>MED 9 (PRIMARY)</p>	<p>HEAR</p>	<p>STATEWIDE EMS</p>	<p>UNICOM</p>
<p>Transmit: 467.950</p>	<p>Transmit: 155.340</p>	<p>Transmit: 155.205</p>	<p>Transmit: 123.075</p>
<p>Receive: 467.950</p>	<p>Receive: 155.340</p>	<p>Receive: 155.205</p>	<p>Receive: 123.075</p>
<p>PL Tone: 192.8</p>	<p>PL Tone: N/A</p>	<p>PL Tone: N/A</p>	<p>PL Tone: N/A</p>
<p>Primary Helipad</p>	<p>The "roof top pad" is the primary helipad. Referred to as "EAST Helipad"</p> <ul style="list-style-type: none"> • Coordinates: 37°32'.39"N, 77°25'.81"W • FAA Designator: VG45 • Standard approach is North/South, South/North • 343' elevation, Helipad is 53' x 53' <p style="text-align: right;"><i>Photos & map on second page</i></p>		
<p>Secondary Helipad</p>	<p>The "I-Lot" is the secondary/military pad</p> <ul style="list-style-type: none"> • Can accommodate Blackhawks • Can accommodate large aircraft • Coordinates: 37°32'.86"N, 77°25'.82W • FAA Designator: 8VA0 • 153.4' elevation, Helipad is 100' x 100' <p style="text-align: right;"><i>Photos & map on second page</i></p>		
<p>Children's Hospital of Richmond at VCU Helipad</p>	<p>The CHoR pad is primary for Children's Hospital. Referred to as "WEST Helipad"</p> <ul style="list-style-type: none"> • Coordinates: 37°32'.26"N, 77°25'.54W • FAA Designator: VG10 • Standard approach is North/South, South/North • 448' elevation, Helipad is 53' x 53' <p style="text-align: right;"><i>Photos & map on third page</i></p>		
<p>FUEL LOCATIONS</p>			
<p>KRIC (Richmond)</p>	<p>KOFP (Hanover)</p>	<p>KFCI (Chesterfield)</p>	<p>KPTB (Dinwiddie)</p>
<p>~5 Nautical Miles from helipads</p>	<p>~10 Nautical Miles from helipads</p>	<p>~9 Nautical Miles from helipads</p>	<p>~22 Nautical Miles from helipads</p>

VCU ED Communications Room (LIFECOMM): 804-828-3989
 LIFEEVAC Communications (LIFECOMM): 877-902-7779

Primary Helipad – “EAST Helipad”

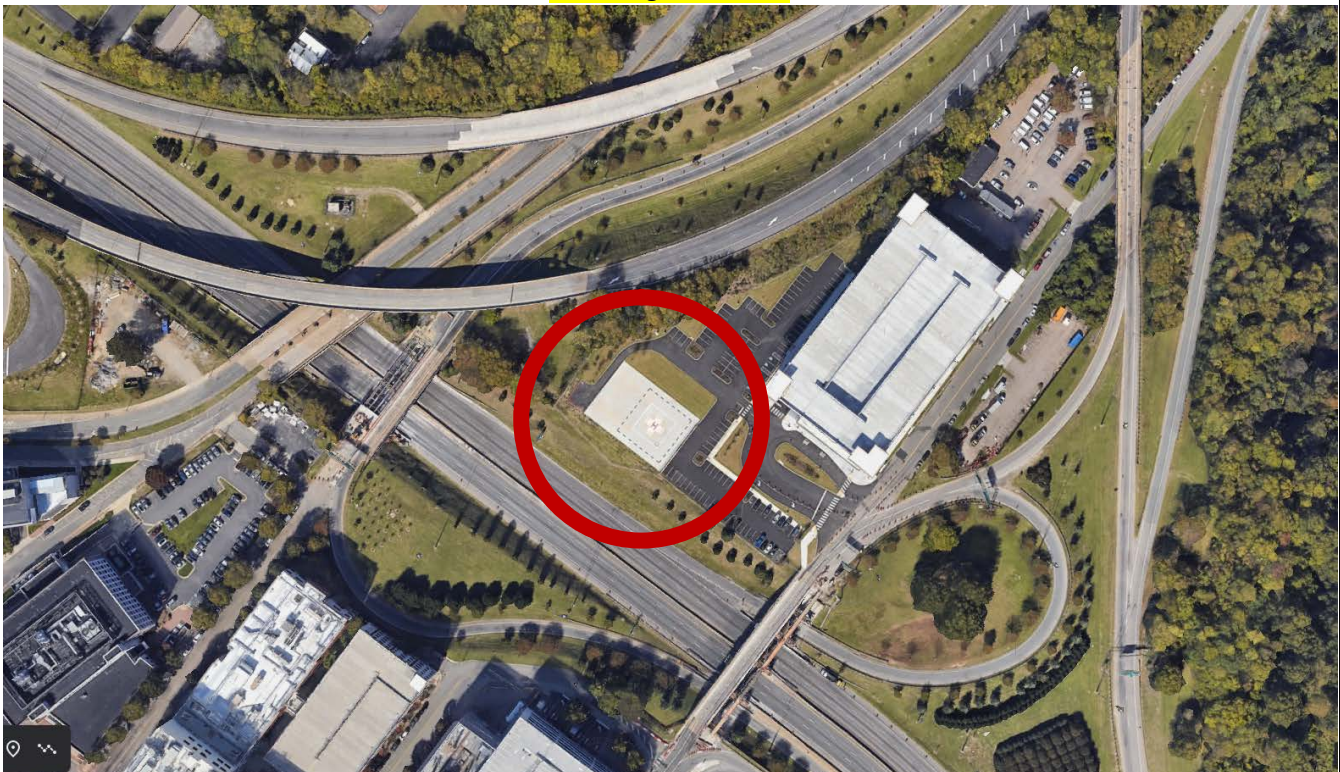
FAA Designator: VG45



Secondary Helipad

**Parking Garage construction is now complete – April 2022*

FAA Designator: 8VA0



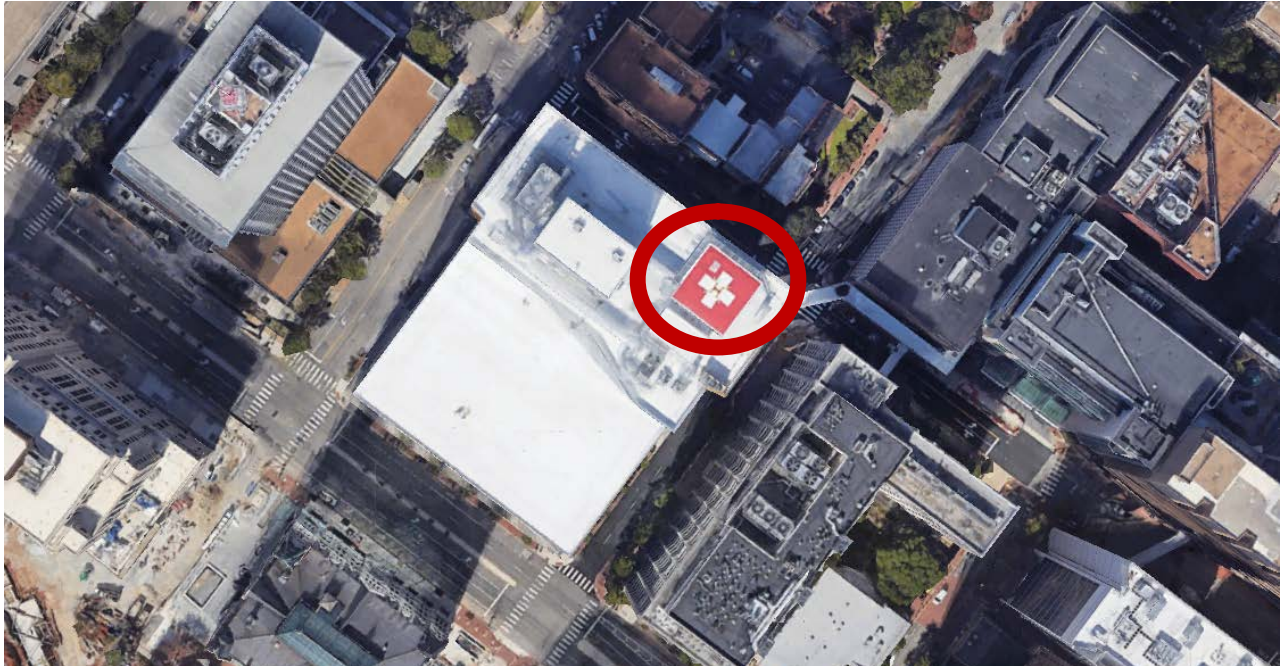
VCU ED Communications Room (LIFECOMM):
LIFEEVAC Communications (LIFECOMM):

804-828-3989
877-902-7779

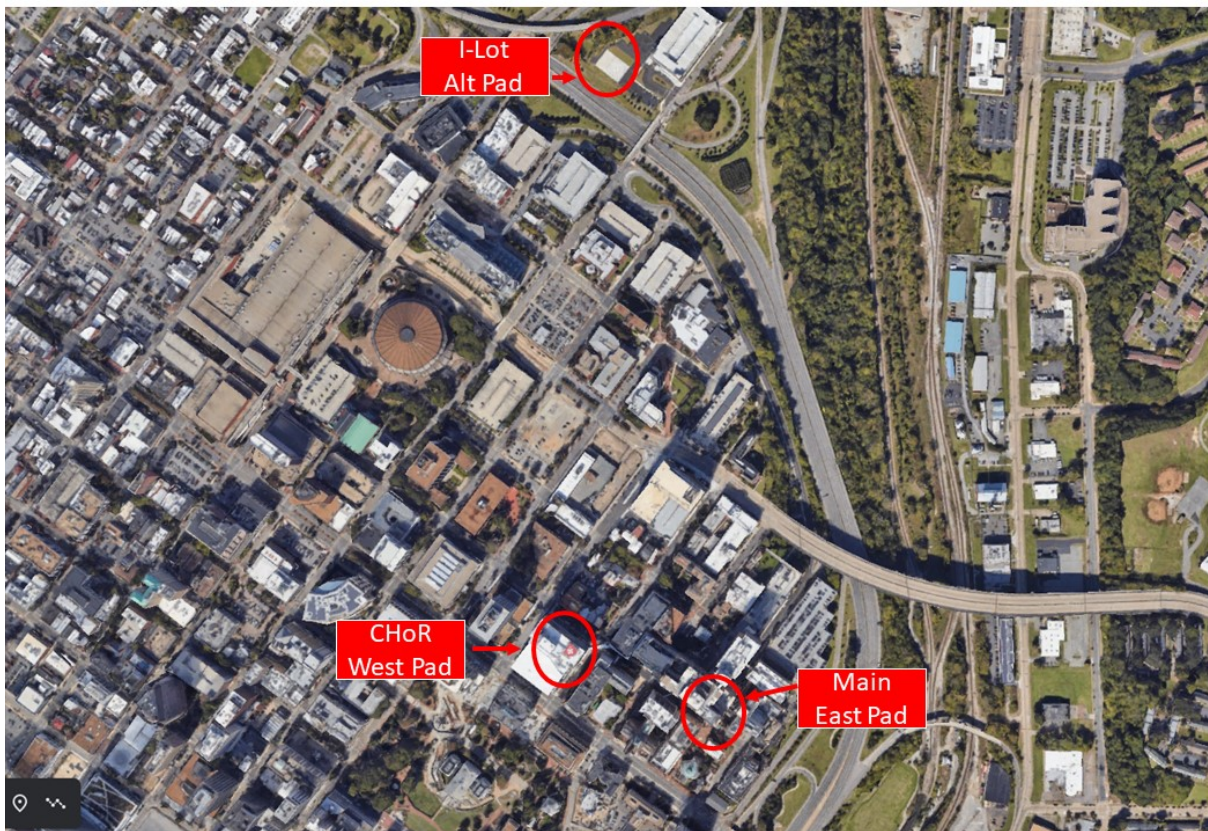
Children's Hospital of Richmond Helipad (CHoR) – "WEST Helipad"

Open as of 5/3/23

FAA Designator: VG10



All three VCU helipads



VCU ED Communications Room (LIFECOMM):
LIFEEVAC Communications (LIFECOMM):

804-828-3989
877-902-7779